

**SANITARIO**

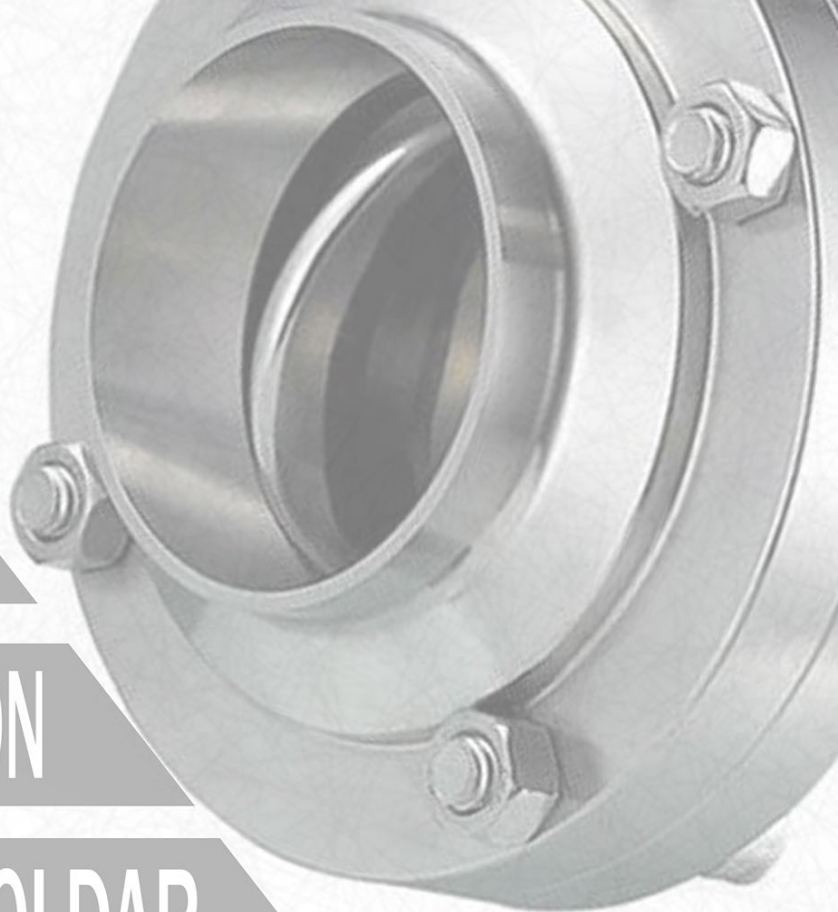
**MATERIA PRIMA**

**ACCESORIO DECORACIÓN**

**ROSCADO, BRIDAS, SOLDAR**

**BOMBAS E INTERCAMBIADORES**

**CONEXIONES RÁPIDAS Y MANGUERAS**



**t a s a e**  
aceros  
especiales s.l.

Accesorio Sanitario DIN



Accesorio Sanitario SMS



## Puertas y accesorios.....





Tubos sanitarios acordes con la norma DIN 11850tig, costura 1.6 µm  
Superficie pulida espejo. Superficie interne 0.8 µm estándar.  
A petición la superficie interna puede ser 0.4 µm.  
Material estándar de AISI 304,304L, 316.

Similar to DIN 11850	DN	Φ	Thickness	Weight	Maximum Pressure (bar)	
			t		20° C	140° C
	10	12	1.5	0.394	355	270
15	18	1.5	0.620	240	185	
20	22	1.5	0.770	200	150	
25	28	1.5	0.995	155	120	
32	34	1.5	1.146	130	100	
40	40	1.5	1.446	110	85	
50	52	1.5	1.897	85	65	
65	70	2	3.430	85	65	
80	85	2	4.160	70	55	
100	104	2	5.030	55	45	
125	129	2	6.360	45	35	
150	154	2	7.490	35	30	
200	204	2	10.120	30	20	

DIN 11850 Series 1	Φ	Thickness	DIN 11850 Series 2	Φ	Thickness	DIN 11850 Series 3	Φ	Thickness
		t			t			t
	12	1		13	1.5		14	2
18	1	19	1.5	20	2			
22	1	23	1.5	24	2			
28	1	29	1.5	30	2			
34	1	35	1.5	36	2			
40	1	41	1.5	42	2			
52	1	53	1.5	54	2			
		70	2					
		85	2					
		104	2					
		129	2					
		154	2					
		204	2					

## Tolerances

### Diameter "Ø"

- "Ø" ≤ 28 ± 0,20
- "Ø" = 28 - 53 ± 0,30
- "Ø" = 60 - 104 ± 0,40

### Thickness "s"

- s = 1,25 - 1,5 ± 0,20
- s = 1,65 - 2,0 ± 0,25

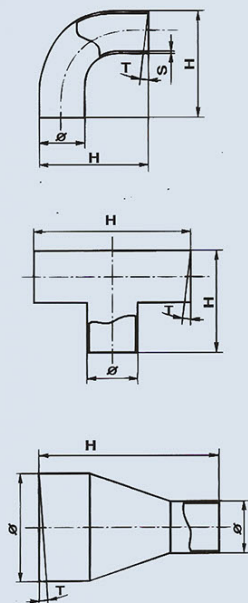
### "T" Cut deviation

- "Ø" ≤ 53 ± 0,30
- "Ø" = 60 - 76,2 ± 0,50
- "Ø" = 85 - 0,60

### Length "H"

- H ≤ 100 ± 0,30
- H ≥ 100 ± 0,50

### Cross-section deviation ≤ 1% Ø

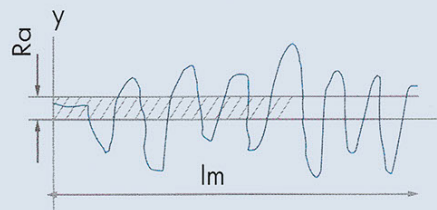


## Internal surface:

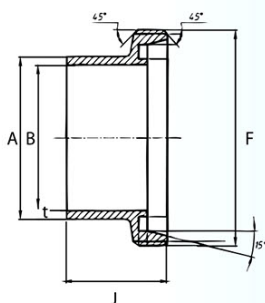
Mirror, Polished, Mat 2B

## Surface roughness

Ra ≤ 0,3µm (micron)

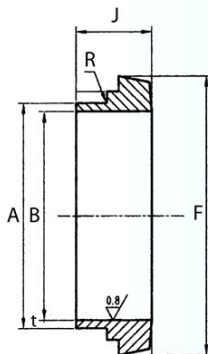


### Casquillo Macho Soldar



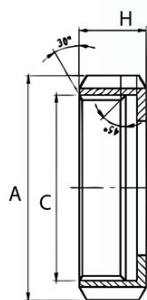
DN	F	A	B	J	t
mm	mm	mm	mm	mm	mm
10	27,6	12	9	21	1,5
15	33,6	18	15	21	1,5
20	43,5	22	19	24	1,5
25	51,5	28	25	29	1,5
32	57,3	34	31	32	1,5
40	64,5	40	37	33	1,5
50	77,5	52	49	35	1,5
60	84,5	61	57	36	2
65	94,5	70	66	40	2
80	109,5	85	81	45	2
100	129,5	104	100	54	2
125	159,3	129	125	46	2
150	189,3	154	150	50	2

### Casquillo Hembra Soldar



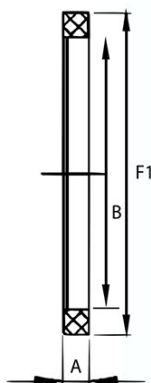
DN	A	B	F	J	t
mm	mm	mm	mm	mm	mm
10	12	9	22	17	1,5
15	18	15	28	17	1,5
20	22	19	36	18	1,5
25	28	25	44	22	1,5
32	34	31	50	25	1,5
40	40	37	56	26	1,5
50	52	49	68	28	1,5
60	61	57	76	30	2
65	70	66	86	32	2
80	85	81	100	37	2
100	104	100	121	44	2
125	129	125	150	34	2
150	154	150	176	37	2

### Tuerca Racord



DN	C	A	H
mm	mm	mm	mm
10	28 x 1/8	38	18
15	34 x 1/8	44	18
20	44 x 1/6	54	21
25	52 x 1/6	63	21
32	58 x 1/6	70	21
40	65 x 1/6	78	21
50	78 x 1/6	92	22
60	85 x 1/6	99	22
65	95 x 1/6	112	25
80	110 x 1/4	127	30
100	130 x 1/4	148	31
125	160 x 1/4	178	35
150	190 x 1/4	210	40

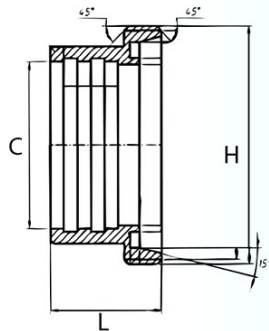
### Junta NBR-EPDM-VITÓN



DN	F1	B	A
mm	mm	mm	mm
10	20	12	5
15	26	18	5
20	33	23	5
25	40	30	5
32	46	36	5
40	52	42	5
50	64	54	5
60	72	62	5
65	81	71	5
80	95	85	5
100	114	104	6
125	142	129	7
150	167	155	7

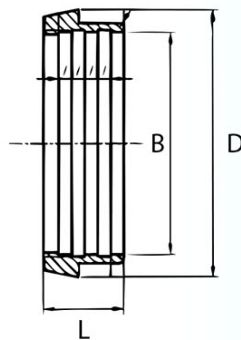
Material : Silicon, Viton, EPDM, NBR

### Casquillo Macho Mandrinar



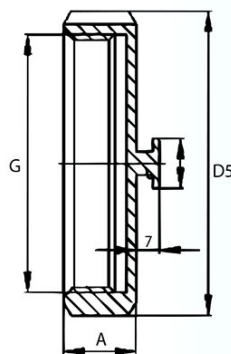
DN	H	C	L
mm	mm	mm	mm
10	27,6	12,2	21
15	33,6	18,2	21
20	43,5	22,2	24
25	51,5	28,2	29
32	57,5	34,2	32
40	64,5	40,2	33
50	77,5	52,2	35
60	85	60,3	37
65	94,5	70,3	40
80	109,5	85,3	45
100	129,5	101,9	54
100	129,5	104,3	54

### Casquillo hembra Mandrinar



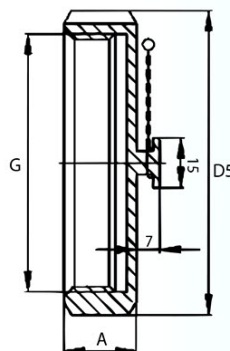
DN	D	B	L
mm	mm	mm	mm
10	22	12,2	17
15	28	18,2	17
20	36	22,2	18
25	44	28,2	22
32	50	34,2	25
40	56	40,2	26
50	68	52,2	28
60	76	60,3	30
65	86	70,3	32
80	100	85,3	37
100	121	101,9	44
100	121	104,3	44

### Tuerca Ciega



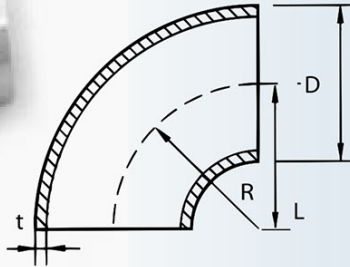
DN	G	D5	A
mm	mm	mm	mm
10	28x1/8	38	18
15	34x1/8	44	18
20	44x1/6	54	20
25	52x1/6	63	21
32	58x1/6	70	21
40	65x1/6	78	21
50	78x1/6	92	22
60	85x1/6	99	22
65	95x1/6	110	25
80	110x1/4	125	29
100	130x1/4	146	31

### Tuerca Ciega con cadena



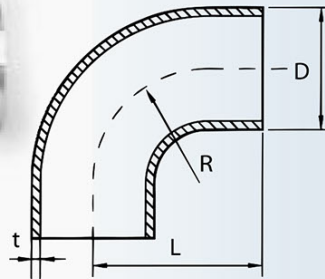
DN	G	D5	A
mm	mm	mm	mm
15	34x1/8	44	18
20	44x1/6	54	20
25	52x1/6	63	21
32	58x1/6	70	21
40	65x1/6	78	21
50	78x1/6	92	22
60	85x1/6	99	22
65	95x1/6	110	25
80	110x1/4	125	29
100	130x1/4	146	31
125	160x1/4	178	35
150	190x1/4	210	40

**Codo Soldar 90°**



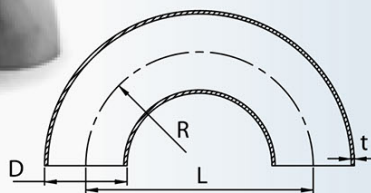
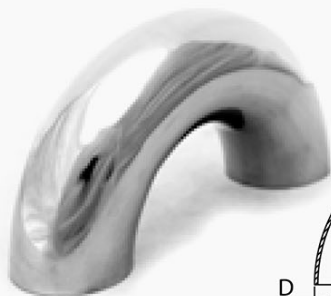
DN	D	t	R	L
mm	mm	mm	mm	mm
10	12	1,5	26	26
15	18	1,5	35	35
20	22	1,5	40	40
25	28	1,5	50	50
32	34	1,5	55	55
40	40	1,5	60	60
50	52	1,5	70	70
60	60	1,5	75	72
65	70	2	80	80
80	85	2	90	90
100	104	2	100	100
125	129	2	187	187
150	154	2	225	225

**Curva Soldar 90° Mandrinar**



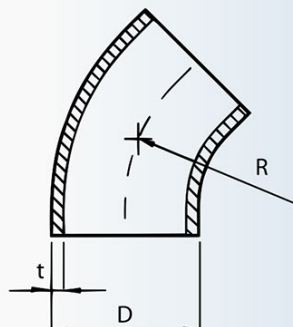
DN	D	t	R	L
mm	mm	mm	mm	mm
15	18	1,5	35	47
20	22	1,5	40	52
25	28	1,5	50	70
32	34	1,5	53	78
40	40	1,5	60	85
50	52	1,5	70	97
60	60	1,5	75	110
65	70	2	80	110
80	85	2	90	118
100	101,6	2	100	140
100	104	2	100	140

**Codo Soldar 180°**



DN	L	D	R	t
mm	mm	mm	mm	mm
15	70	18	35	1,5
20	80	22	40	1,5
25	100	28	50	1,5
32	110	34	55	1,5
40	120	40	60	1,5
50	140	52	70	1,5
65	160	70	80	2
80	180	85	90	2
100	200	104	100	2

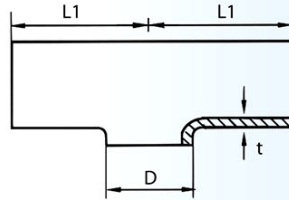
**Codo Soldar 45°**



DN	D	t	R
mm	mm	mm	mm
25	28	1,5	50
32	34	1,5	55
40	40	1,5	60
50	52	1,5	70
60	60	1,5	75
65	70	2	80
80	85	2	90
100	104	2	100
125	129	2	187
150	154	2	225

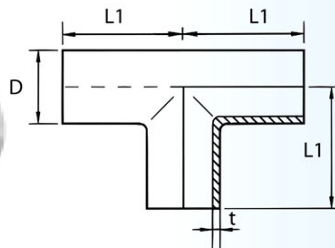


### Te Solder



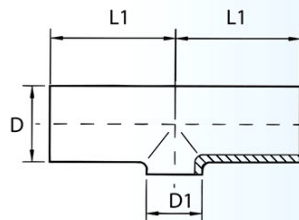
DN	D	t	L1
mm	mm	mm	mm
25	28	1,5	50
32	34	1,5	55
40	40	1,5	60
50	52	1,5	70
60	60	1,5	85
65	70	2	80
80	85	2	90
100	104	2	100
125	129	2	187
150	154	2	225

### Te Mandrinar



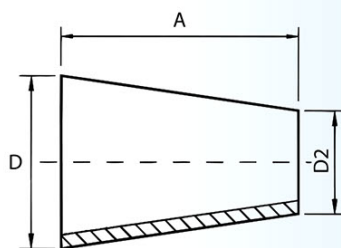
DN	D	t	L1
mm	mm	mm	mm
10	12	1,5	26
15	18	1,5	35
20	22	1,5	40
25	28	1,5	50
32	34	1,5	55
40	40	1,5	60
50	52	1,5	70
60	60	1,5	75
65	70	2	80
80	85	2	90
100	104	2	100
125	129	2	187

### Te Solder Reducida



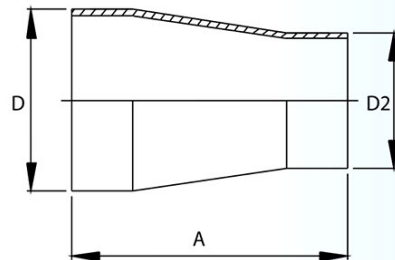
DN	D	D1	L1
mm	mm	mm	mm
32	34	28	55
40	40	34	60
50	52	40	70
65	70	52	80
80	85	70	90
100	101,6	85	150
100	104	85	100
32	34	22	55
40	40	28	60
50	52	34	70
65	70	40	80
80	85	52	90
100	104	70	100

### Reducción Concéntrica



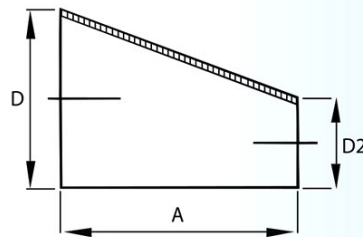
DN	DN1	A	D	D2
mm	mm	mm	mm	mm
20	15	7	22	18
25	20	11	28	22
32	25	11	34	28
40	32	11	40	34
50	40	22	52	40
65	50	29	70	52
80	65	27	85	70
100	80	34	104	85
40	25	22	40	28
50	32	33	52	34
65	40	51	70	40
80	50	56	85	52
100	65	61	104	70
50	25	44	52	28
65	32	62	70	34
80	40	78	85	40
100	50	90	104	52
125	100	45	129	104
150	125	45	154	129
150	100	90	154	104

### Reducción Concéntrica Mandrinar



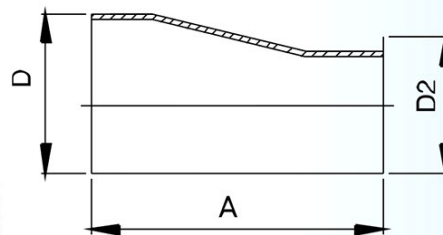
DN	DN1	A	D	D2
mm	mm	mm	mm	mm
20	15	60	22	18
25	20	80	28	22
32	25	102	34	28
40	32	115	40	34
50	40	125	52	40
65	50	140	70	52
80	65	160	85	70
100	80	150	104	85
32	20	80	34	22
25	15	60	28	18
40	25	88	40	28
50	32	113	52	34
65	40	130	70	40
80	50	120	85	52
100	65	120	104	70
40	20	102	40	22
50	25	129	52	28
65	32	120	70	34
80	40	125	85	40
100	50	127	104	52

### Reducción Excentrica



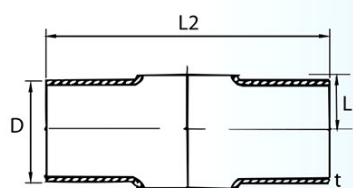
DN	DN1	A	D	D2
mm	mm	mm	mm	mm
20	15	7	22	18
25	20	11	28	22
32	25	11	34	28
40	32	11	40	34
50	40	22	52	40
65	50	29	70	52
80	65	27	85	70
100	80	34	104	85
25	15	18	28	18
40	25	22	40	28
50	32	33	52	34
65	40	51	70	40
80	50	56	85	52
100	65	61	104	70
50	25	44	52	28

### Reducción Excentrica Mandrinar



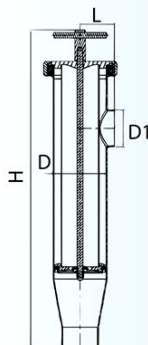
DN	DN1	A	D	D2
mm	mm	mm	mm	mm
20	15	60	22	18
25	20	80	28	22
32	25	102	34	28
40	32	115	40	34
50	40	125	52	40
65	50	140	70	52
80	65	160	85	70
100	80	150	104	85
25	15	60	28	18
40	25	88	40	28
50	32	113	52	34
65	40	130	70	40
80	50	120	85	52
100	65	120	104	70
50	25	129	52	28

### Cruz Soldar



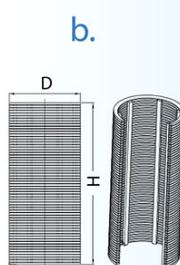
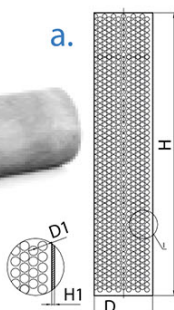
DN	L2	L1	D	t
mm	mm	mm	mm	mm
25	100	15,5	28	1,5
32	110	19	34	1,5
40	120	22	40	1,5
50	140	28,5	52	1,5
65	160	39,5	70	2
80	180	46,5	85	2
100	200	58	104	2

### Filtro Escuadra Solder



DN	D1	H	D	L
mm	mm	mm	mm	mm
25	28	425	85	77,5
32	34	425	85	77,5
40	40	425	85	77,5
50	52	425	85	77,5
65	70	565	102	101
80	85	585	114	107
100	104	700	154	127

### Tamíz para Filtro Escuadra



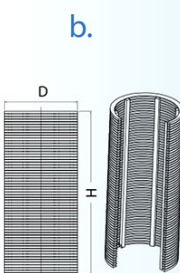
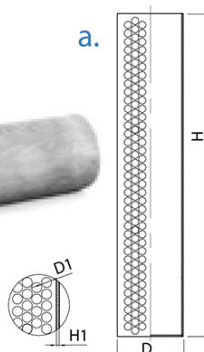
DN	D	H	D1	H1
mm	mm	mm	mm	mm
25	58	270	0,5-1-2	1
32	58	270	0,5-1-2	1
40	58	270	0,5-1-2	1
50	58	270	0,5-1-2	1
65	72	312	0,5-1-2	1
80	78	350	0,5-1-2	1,2
100	105	469	0,5-1-2	1,5

### Filtro de Linea



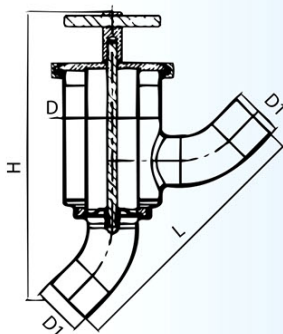
DN	D	H
mm	mm	mm
25	28	405
32	34	405
40	40	405
50	52	405
65	70	485
80	85	534
100	104	640

### Tamíz para Filtro de Linea



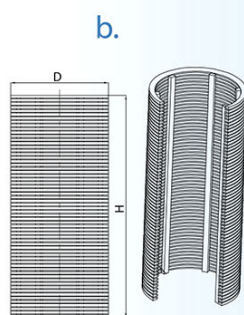
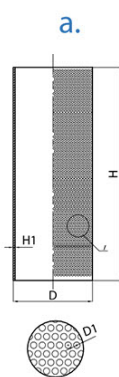
DN	D	H	D1	H1
mm	mm	mm	mm	mm
25	58	270	0,5-1	1,2
32	58	270	0,5-1	1,2
40	58	270	0,5-1	1,2
50	58	270	0,5-1	1,2
65	69	350	0,5-1	1,2
80	90	365	0,5-1	1,2
100	110	450	0,5-1	1,5

### Filtro Y 45°



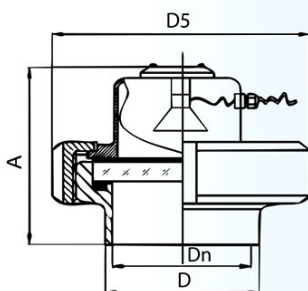
DN	H	L	D1	D
mm	mm	mm	mm	mm
25	275	204	28	102
32	288	226	34	102
40	288	242	40	102
50	312	280	52	102
65	390	362	70	114
80	405	406	85	114
100	565	460	104	154

### Tamíz para Filtro Y 45°



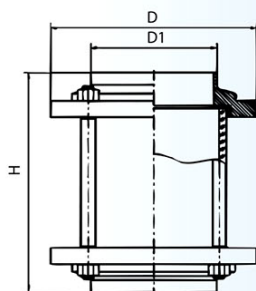
DN	D	H	D1	H1
mm	mm	mm	mm	mm
25	55	146	0,5-1-2	1
32	55	146	0,5-1-2	1
40	55	146	0,5-1-2	1
50	55	146	0,5-1-2	1
65	79	180	0,5-1-2	1
80	79	180	0,5-1-2	1
100	105	297	0,5-1-2	2

### Mirilla con Luz



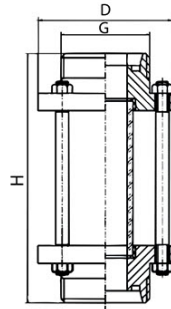
DN	A	D5	D	Dn	Watt	Volt
mm	mm	mm	mm	mm		
80	90	125	87	81	20	24
100	100	146	106	100	50	24
125	90	178	132	125	50	24
150	96	210	157	150	50	24

### Mirilla Circular Soldar/Soldar



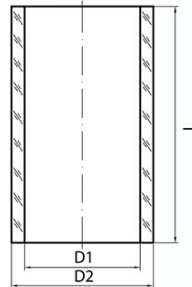
DN	D1	D	H
mm	mm	mm	mm
25	28	78	140
32	34	86	140
40	40	90	140
50	52	102	142
65	70	124	146
80	85	139	150
100	104	154	154

### Mirilla Roscada



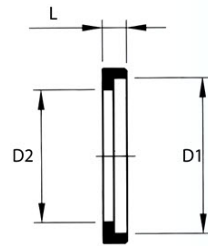
DN	G	D	H
mm	mm	mm	mm
25	28	78	156
32	34	86	160
40	40	90	164
50	52	106	166
65	70	124	170
80	85	139	174
100	104	159	194

### Cristal para Mirilla



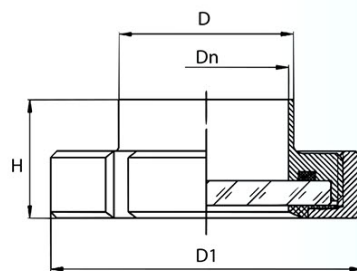
DN	D1	D2	L
mm	mm	mm	mm
25	25	33	100
32	32	40	100
40	37	45	100
50	50	60	100
65	66	79	100
80	86	97	100
100	100	120	100

### Junta para Mirilla



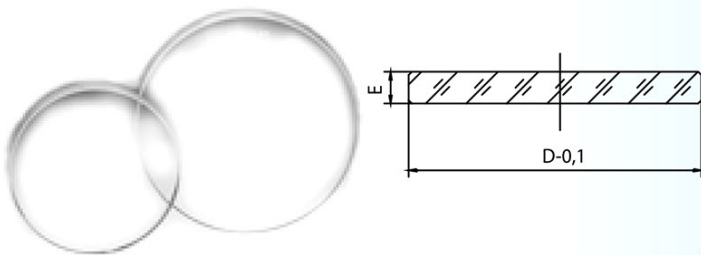
DN	D1	D2	L
mm	mm	mm	mm
25	33	23	7
32	40	32	7
40	45	37	7
50	60	50	7
65	79	66	7
80	97	86	8
100	120	100	8

### Mirilla Plana Soldar



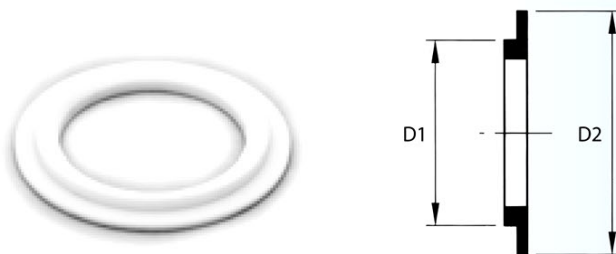
DN	D1	D	H
mm	mm	mm	mm
25	63	28	29
32	70	34	31
40	78	40	33
50	92	52	35
65	112	70	40
80	127	85	45
100	148	104	54

### Junta Pirex para Mirilla Plana



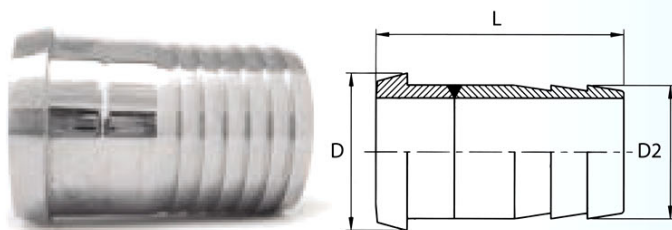
DN	D	E			
mm	mm	mm			
25	40	8			
32	45	10			
40	55	10			
50	64,3	10			
65	84	10			
80	95	12			
100	114	12			

### Junta Teflon para Mirilla Plana



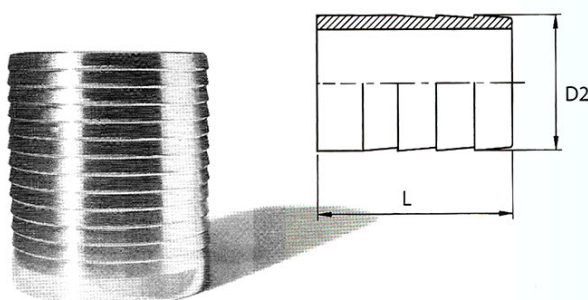
DN	D1	D2			
mm	mm	mm			
25	34	44			
32	40	50			
40	47	57			
50	62	73			
65	80	91			
80	94	103			
100	115	123			

### Entronque Manguera



DN	D	D2	L		
mm	mm	mm	mm		
20	36	20	66		
25	44	25	72		
32	50	35	82		
40	56	40	86		
50	58	50	93		
60	76	60	102		
65	86	70	109		
80	100	80	117		
100	121	100	130		

### Entronque Soldar Manguera

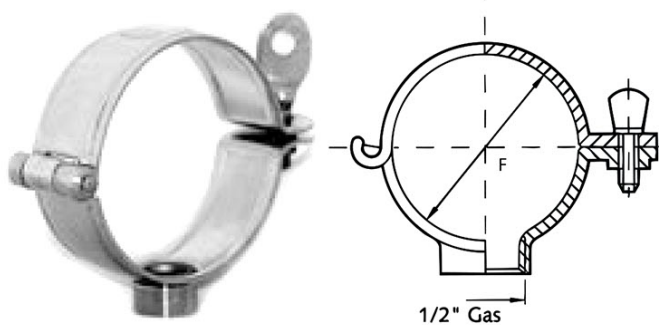


DN	D2	L			
mm	mm	mm			
20	20	64			
25	25	68			
32	35	75			
40	40	75			
50	50	97			
60	60	104			
65	70	108			
80	80	123			
100	100	126			

## Llave Universal para tuberías

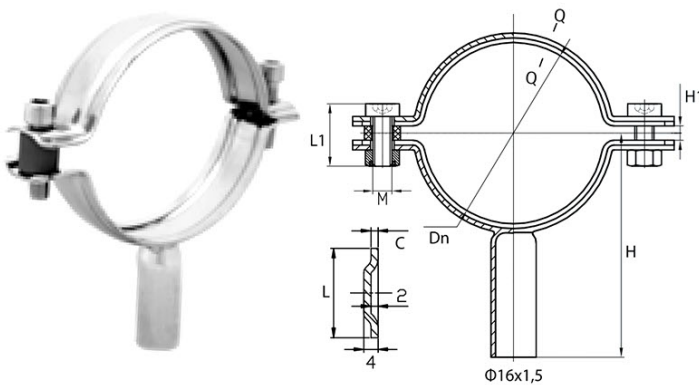


## Abrazadera para Tubo



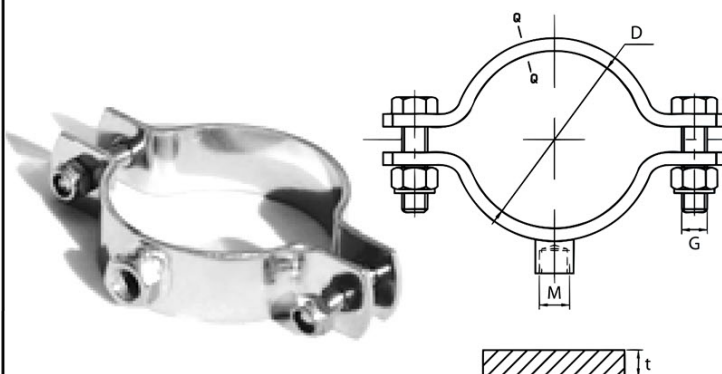
DN	F			
mm	mm			
10	12			
15	18			
20	22			
25	28			
32	34			
40	40			
50	52			
60	60			
65	70			
80	85			
100	101,6			

## Abrazadera para Tubo con Tubo



DN	Dn	H	H1	M-L1	L	C
mm	mm	mm	mm	mm	mm	mm
20	19	62,5	8	M8-25	25	1,5
25	25,4	65,7	9	M8-25	25	1,5
32	35	65	9	M8-25	25	1,5
40	38	72	10	M8-30	25	1,5
50	50,8	78,4	10	M8-30	25	1,5
65	70	84	11	M8-30	25	2
80	85	91	12	M8-30	25	2
100	101,6	103,8	12	M8-30	28	2
125	129	117,5	12	M10-40	28	2,5
150	154	130	12	M10-40	28	2,5

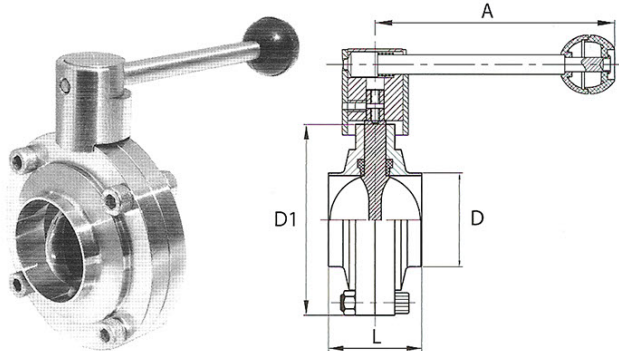
## Abrazadera para Tubo con Tuerca y Sin Tuerca



DN	D	M	t	G
mm	mm	mm	mm	mm
25	28	8	2	M6
32	34	8	2,5	M6
40	40	8	2,5	M6
50	52	8	2,5	M6
65	70	10	2,5	M6
80	85	10	2,5	M6
100	104	10	3	M6
125	129	10	3	M8
150	154	10	3	M8

### Válvula de Mariposa Soldar/Soldar

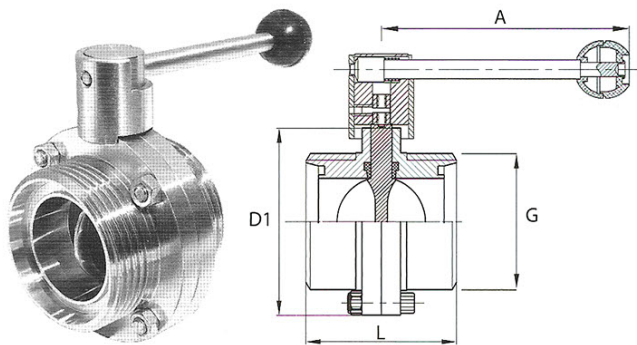
CE



SIZE	D	A	L	D1
DN	mm	mm	mm	mm
25	28	126	50	78
32	34	126	50	86
40	40	126	50	90
50	52	133	52	106
65	70	144	56	124
80	85	160	60	139
100	104	160	64	159
125	129	220	80	185
150	154	220	90	215

### Válvula de Mariposa Macho/Macho

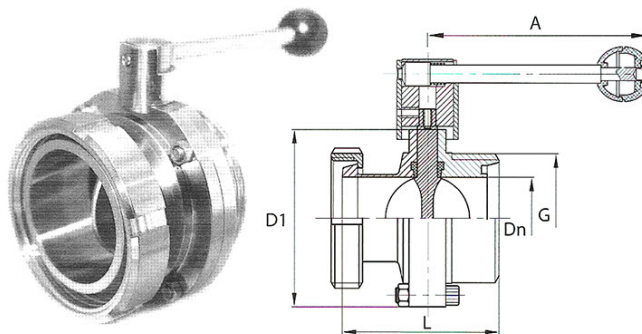
CE



SIZE	G	A	L	D1
DN	mm	mm	mm	mm
25	RD52x1/6	126	66	78
32	RD58x1/6	126	70	86
40	RD65x1/6	126	74	90
50	RD78x1/6	133	76	106
65	RD95x1/6	144	84	124
80	RD110x1/4	160	90	139
100	RD130x1/4	160	104	159
125	RD160x1/4	220	130	185
150	RD190x1/4	220	150	215

### Válvula Mariposa Macho/Hembra

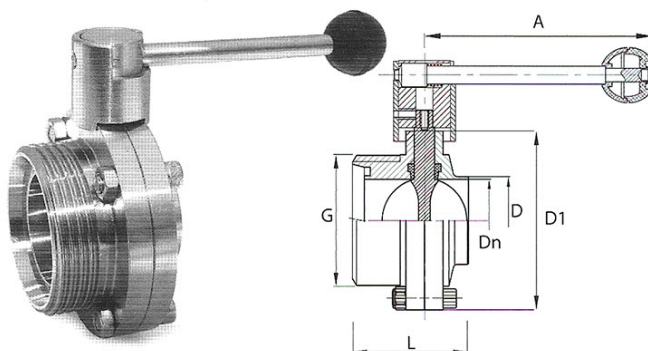
CE



SIZE	G	D1	L	A
DN	mm	mm	mm	mm
25	RD52x1/6	78	75	126
32	RD58x1/6	86	77	126
40	RD65x1/6	90	81	126
50	RD78x1/6	106	84	133
65	RD95x1/6	124	90	144
80	RD110x1/4	139	98	160
100	RD130x1/4	159	110	160
125	RD160x1/4	185	138	220
150	RD190x1/4	215	154	220

### Válvula Mariposa Macho/Soldar

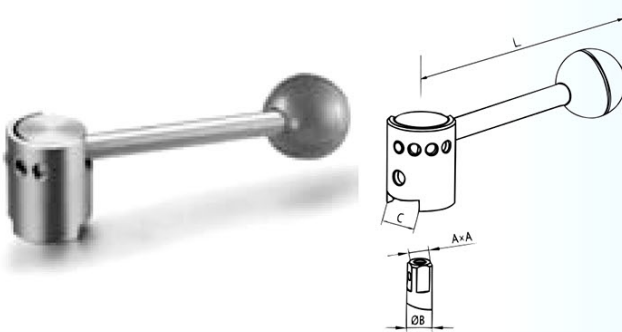
CE



SIZE	G	D	D1	L	A
DN	mm	mm	mm	mm	mm
25	RD52x1/6	28	78	50	126
32	RD58x1/6	34	86	50	126
40	RD65x1/6	40	90	50	126
50	RD78x1/6	52	106	52	133
65	RD95x1/6	70	124	56	144
80	RD110x1/4	85	139	60	160
100	RD130x1/4	104	159	64	160
125	RD160x1/4	129	185	80	220
150	RD190x1/4	154	215	90	220

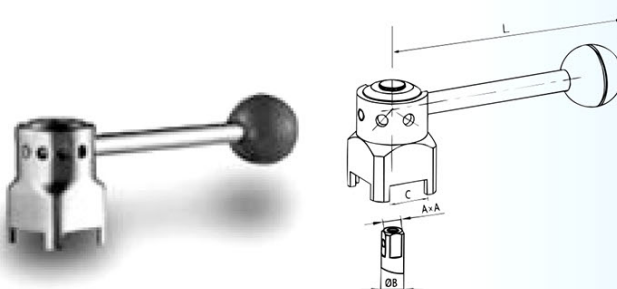


### Maneta Redonda Valvula de Mariposa 3 Posiciones Tipo C



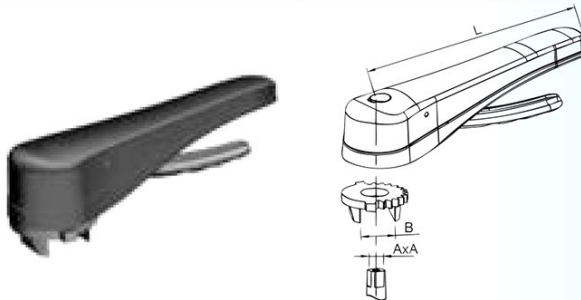
DN	A	B	C	L
mm	mm	mm	mm	mm
25-50	8x8	12	20	130
65-100	10x10	14	22	160
125-150	12x12	15	26	200

### Maneta Cuadrada Valvula de Mariposa 3 Posiciones Tipo Q



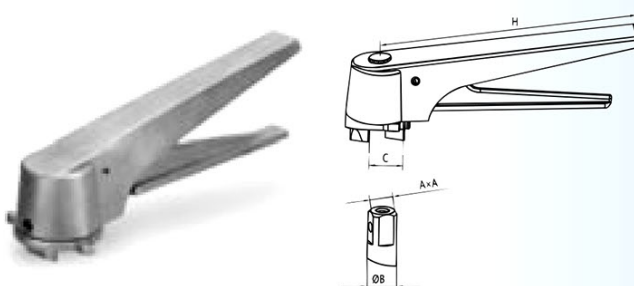
DN	A	B	C	L
mm	mm	mm	mm	mm
25-50	8x8	12	20	130
65-100	10x10	14	22	160
125-150	12x12	15	26	200

### Maneta Válvula Multiposición



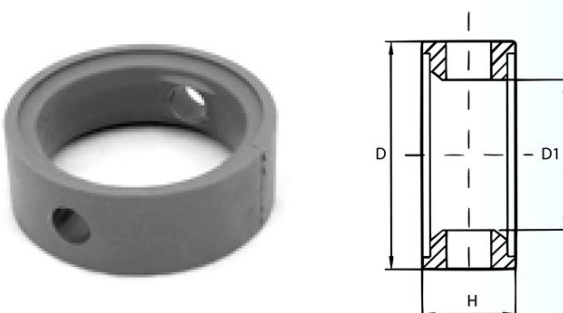
DN	A	B	L
mm	mm	mm	mm
10-40	8x8	20,2	144
50	8x8	22,2	144
65	10x10	22,2	160
80-100	10x10	22,2	160

### Maneta Inox Válvula Multiposición



DN	A	B	C	H
mm	mm	mm	mm	mm
25-50	8x8	10,8	20	8x8
65	10x10	11,8	22	10x10
80-100	11x11	14,8	22	10x10

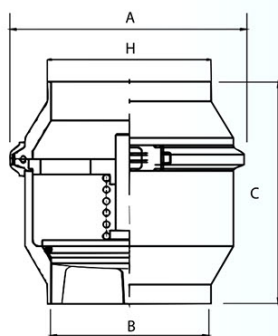
### Junta Valvula de Mariposa



DIN	D	D1	H
mm	mm	mm	mm
25	41,5	25	21,7
32	48,5	31,5	21,5
40	55	38,5	22
50	64,5	49	21,5
65	85	66	27,8
80	103	81	28
100	121,5	100	32

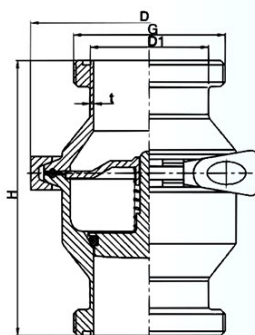
Material: Silicon, Viton, EPDM, NBR

### Válvula de Retención Soldar



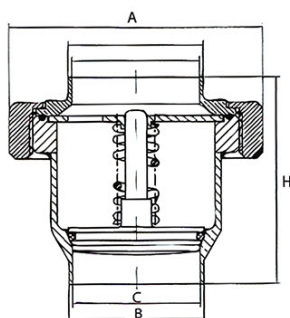
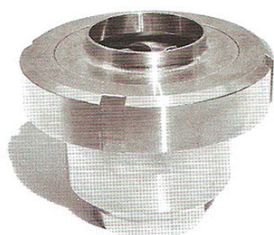
DN	H	A	B	C
mm	mm	mm	mm	mm
25	28	72	25	78
32	34	85,5	31	81
40	40	85,5	37	81
50	52	99	49	90
65	70	127	66	101
80	85	138	81	116
100	104	164	100	156

### Válvula de Retención Macho



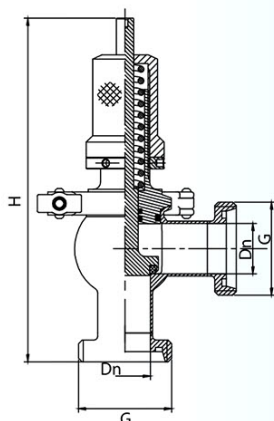
DN	D1	D	H
mm	mm	mm	mm
25	28	72	111,5
32	34	85,5	116,5
40	40	85,5	116,5
50	52	99	130
65	70	127	142,5
80	85	138	155,5
100	104	164	182,5

### Válvula de Retención Soldar/Tuerca



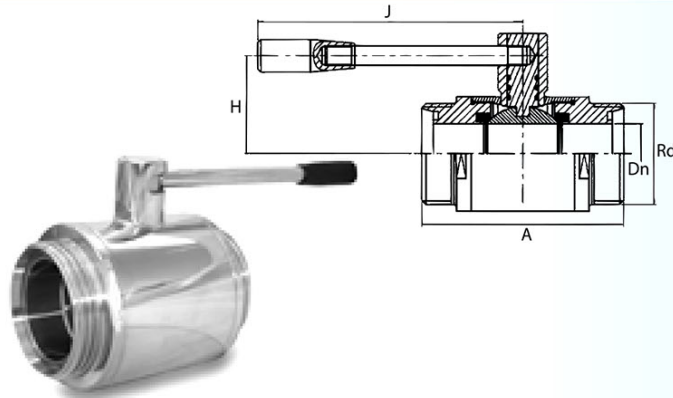
DN	H	A	B	C
mm	mm	mm	mm	mm
25	65	70	28	25
32	70	78	34	31
40	76	92	40	37
50	87	110	52	49
65	107	125	70	66
80	117	146	85	81
100	131	178	104	100

### Válvula de Seguridad Regulable Macho



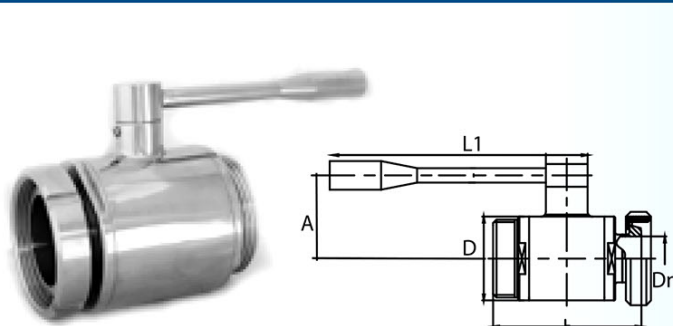
DN	H	G	bar	m <sup>3</sup> /h
mm	mm	mm		
25	137	51,5x1/6	0-3	10
32	137	57,5x1/6	3-6	12
40	137	64,5x1/6	3-6	15
50	281	77,5x1/6	3-6	20
65	315	94,5x1/6	3-6	35

### Vávula Sanitaria de Bola Macho/Soldar



DN	Rd	Dn	J	A	H
mm	mm	mm	mm	mm	mm
10	28x1/8	10	124	95	42
15	34x1/8	15	124	95	42
20	44x1/6	19	124	95	42
25	52x1/6	25	146	100	48
32	58x1/6	31	146	108	50
40	65x1/6	37	185	123	60
50	78x1/6	49	185	136	68
65	95x1/6	66	243	161	85
80	110x1/4	81	243	180	96
100	130x1/4	100	273	204	114

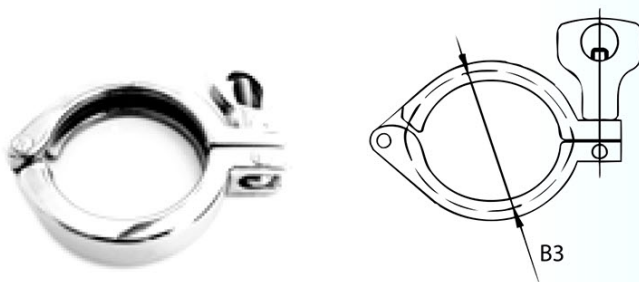
### Vávula Sanitaria de Bola Macho/Tuerca



DN	H	Dn	D	L	L1	A
mm	mm	mm	mm	mm	mm	mm
10	28x1/8	10	28	70	75	58
15	34x1/8	15	35	72	82	67
20	44x1/6	20	40	65	82	70
25	52x1/6	25	50	96	98	75
32	58x1/6	32	62	104	120	101
40	65x1/6	36	70	124	120	101
50	78x1/6	50	88	127	153	125
65	95x1/6	66	114	153	190	158
80	110x1/4	76	136	181	248	193
100	130x1/4	98,5	160	198	248	230
125	160x1/4	120	200	262	340	193

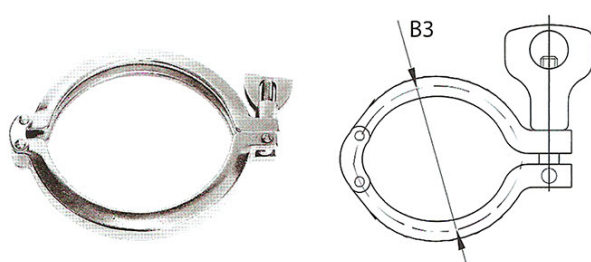
## CLAMP/DIN

### Abrazadera Clamp



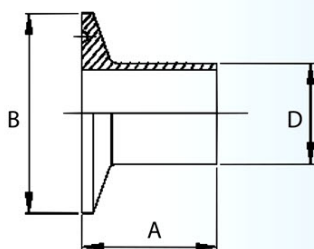
DN	B3
mm	mm
20	37
25	53
32	53
40	53
50	67
65	94
80	109
100	122

### Abrazadera Clamp 2 pin



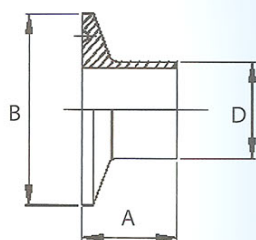
DN	B3
mm	mm
20	37
25	53
32	53
40	53
50	67
65	94
80	109
100	122

### Casquillo Clamp Largo



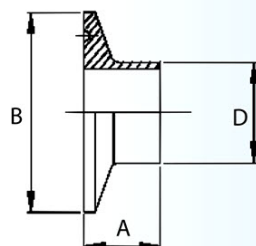
DN	B	D	A
mm	mm	mm	mm
20	34	22	18
25	50,5	28	21,5
32	50,5	34	21,5
40	50,5	40	21,5
50	64	52	28
65	91	70	28
80	106	85	28
100	119	104	28

### Casquillo Clamp Mediano



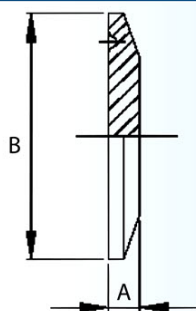
DN	B	D	A
mm	mm	mm	mm
20	34	22	18
25	50,5	28	21,5
32	50,5	34	21,5
40	50,5	40	21,5
50	64	52	28
65	91	70	28
80	106	85	28
100	119	104	28

### Casquillo Clamp Corto



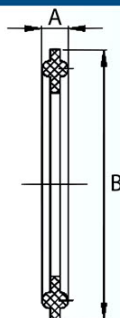
DN	B	D	A
mm	mm	mm	mm
20	34	22	12,7
25	50,5	28	12,7
32	50,5	34	12,7
40	50,5	40	12,7
50	64	52	12,7
65	91	70	12,7
80	106	85	12,7
100	119	104	12,7

### Tapa Clamp



DN	B	A
mm	mm	mm
20	34	6,3
25	50,5	6,3
32	50,5	6,3
40	50,5	6,3
50	64	6,3
65	91	6,3
80	106	6,3
100	119	6,3

### Junta Clamp



DN	B	A
mm	mm	mm
20	34	5
25	50,5	5
32	50,5	5,5
40	50,5	5,5
50	64	5,5
65	91	5,5
80	106	5,5
100	119	5,5

Material : Silicon, Viton, EPDM, Teflon



Tubos sanitarios acordes con la norma SMS 3008, ASTM A270, ISO 1127 costura 1.6 µm  
Superficie pulida espejo. Superficie interne 0.8 µm estándar.  
A petición la superficie interna puede ser 0.4 µm.  
Material estándar de AISI 304,304L, 316.

SMS 3008	DN	Φ	Thickness	Weight	Maximum Pressure (bar)	
			t		20° C	140° C
	1"	25.4	1.2	0.698	140	90
1 1/4"	32.0	1.2	0.918	100	70	
1 1/2"	38.0	1.2	1.091	80	55	
2"	51.0	1.2	1.467	60	45	
2 1/2"	63.5	1.6	2.441	60	45	
3"	76.0	1.6	3.650	50	35	
4"	101.6	2.0	4.914	50	35	

BSP	Φ	Thickness	ASTM A270	Φ	Thickness
		t			t
	25.4	1.25		25.4	1.65
25.4	1.50	38.1	1.65		
38.1	1.25	50.8	1.65		
38.1	1.50	63.5	1.65		
50.8	1.25	76.2	1.65		
50.8	1.50	101.6	2.11		
63.5	1.50				
76.1	1.60				
76.1	2.00				
101.6	2.00				

### Tolerances

#### Diameter "Ø"

- Ø ≤ 28 ± 0,20
- Ø = 28 - 53 ± 0,30
- Ø = 60 - 104 ± 0,40

#### Thickness "s"

- s = 1,25 - 1,5 ± 0,20
- s = 1,65 - 2,0 ± 0,25

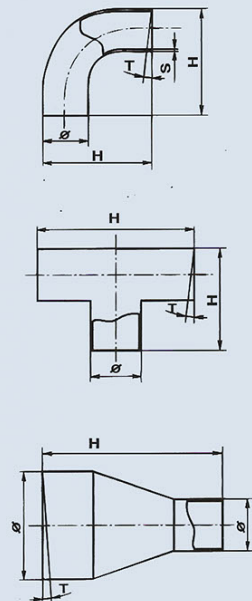
#### "T" Cut deviation

- Ø ≤ 53 ± 0,30
- Ø = 60 - 76,2 ± 0,50
- Ø = 85 - 0,60

#### Length "H"

- H ≤ 100 ± 0,30
- H ≥ 100 ± 0,50

#### Cross-section deviation ≤ 1% Ø

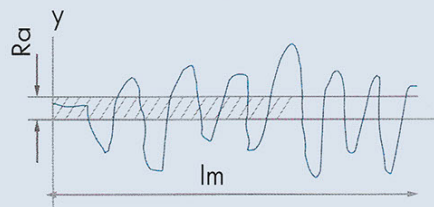


### Internal surface:

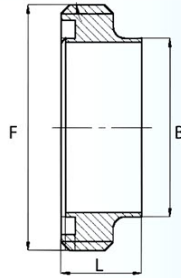
Mirror, Polished, Mat 2B

### Surface roughness

Ra ≤ 0,3µm (micron)

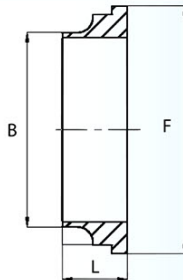


### Macho Soldar



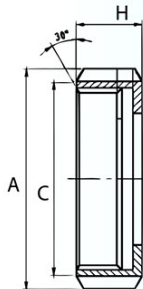
DN	DN	F	B	L
mm	inch	mm	mm	mm
25	1	40X 1/6	25,4	19
38	1 1/2	60X 1/6	38,1	23
51	2	70X 1/6	50,8	23
63	2 1/2	85X 1/6	63,5	27
76	3	98X 1/6	76,1	27
101	4	132X 1/6	101,6	32

### Casquillo Soldar



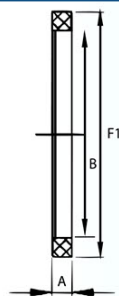
DN	DN	B	F	L
mm	inch	mm	mm	mm
25	1	25,4	35,5	15,5
38	1 1/2	38,1	55	16
51	2	50,8	65	17
63	2 1/2	63,5	80	17
76	3	76,1	93	19
101	4	101,6	127	19

### Tuerca Racord



DN	DN	C	A	H
mm	inch	mm	mm	mm
25	1	40X 1/6	51	19
38	1 1/2	60X 1/6	74	23
51	2	70X 1/6	84	24
63	2 1/2	85X 1/6	100	28
76	3	98X 1/6	114	30
101	4	132X 1/6	150	31

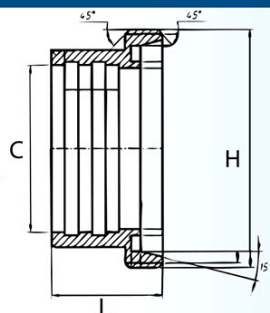
### Junta Racord



DN	Dn	F1	A	B
mm	inch	mm	mm	mm
25	1	33	5,5	25
38	1 1/2	48	5,5	38
51	2	61	5,5	51
63	2 1/2	73	5,5	63,5
76	3	86	6	76,1
101	4	114	6	101,6

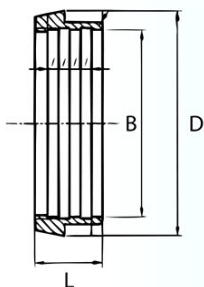
Material : Silicon, Viton, EPDM, NBR

### Casquillo Macho Mandrinar



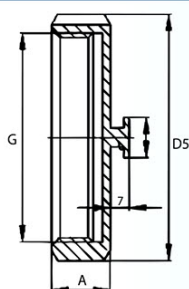
DN	DN	H	C	L
mm	inch	mm	mm	mm
25	1	40X 1/6	25,2	20
38	1 1/2	60X 1/6	38,2	23
51	2	70X 1/6	51,2	25
63	2 1/2	85X 1/6	63,7	30
76	3	98X 1/6	76,2	35
101	4	132X 1/6	101,8	40

### Macho Solder Mandrinar



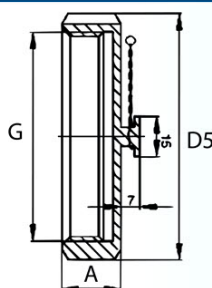
DN	DN	D	B	L
mm	inch	mm	mm	mm
25	1	35,5	25,2	17
38	1 1/2	55	38,2	20
51	2	65	51,2	20
63	2 1/2	80	63,7	25
76	3	93	76,2	30
101	4	127	101,8	30

### Tuerca Racord Ciega



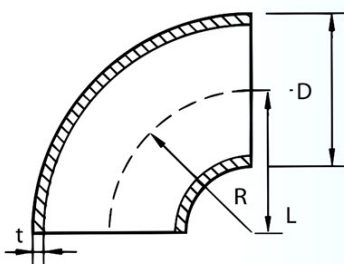
DN	DN	G	D5	A
mm	inch	mm	mm	mm
25	1	40X1/6	50	20
38	1 1/2	60X1/6	72	25
51	2	70X1/6	82	26
63	2 1/2	85X1/6	97	30
76	3	98X1/6	111	32
101	4	132X1/6	146	45

### Tuerca Racord Ciega con Cadena



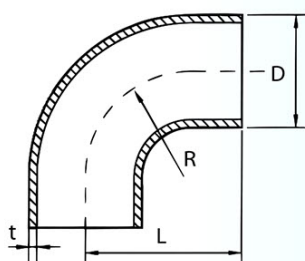
DN	DN	G	D5	A
mm	inch	mm	mm	mm
25	1	40X1/6	50	20
38	1 1/2	60X1/6	72	25
51	2	70X1/6	82	26
63	2 1/2	85X1/6	97	30
76	3	98X1/6	111	32
101	4	132X1/6	146	45

### Codo Solder 90°



DN	DN	D	L	t	R
mm	inch	mm	mm	mm	mm
25	1	25,4	38,1	1,5	38,1
38	1 1/2	38,1	57,2	1,5	57,2
51	2	50,8	76,2	1,5	76,2
63	2 1/2	63,5	95,2	1,5	95,2
76	3	76,1	114,3	1,5	114,3
101	4	101,6	152,4	2	152,4

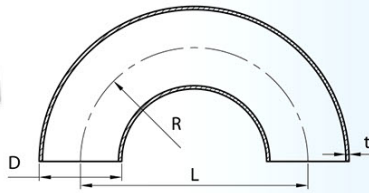
### Codo Solder 90° Mandrinar



DN	DN	D	L	t	R
mm	inch	mm	mm	mm	mm
25	1	25,4	52,4	1,5	38,1
38	1 1/2	38,1	74,6	1,5	57,2
51	2	50,8	103,2	1,5	76,2
63	2 1/2	63,5	131,8	1,5	95,3
76	3	76,1	160,3	2	114,3
101	4	101,6	211,1	2	152,4

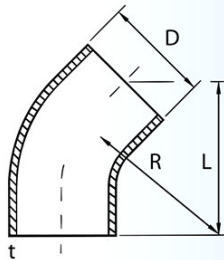


### Codo Soldar 180°



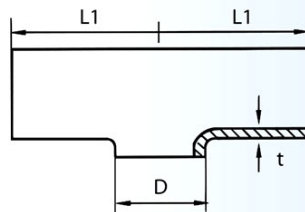
DN mm	DN inch	L mm	D mm	R mm	t mm
25	1	76,2	25,4	38,1	1,5
38	1 1/2	114,4	38,1	57,2	1,5
51	2	152,4	50,8	76,2	1,5
63	2 1/2	190,4	63,5	95,2	1,5
76	3	228,6	76,1	114,3	1,5-2
101	4	304,8	101,6	152,4	2

### Codo Soldar 45°



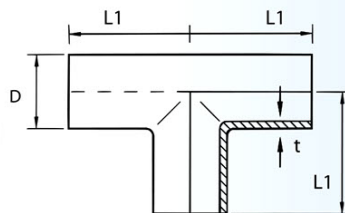
DN mm	DN inch	D mm	R mm	t mm
25	1	25,4	38,7	1,5
38	1 1/2	38,1	57,2	1,5
51	2	50,8	76,2	1,5
63	2 1/2	63,5	95,3	1,5
76	3	76,1	114,3	1,5-2
101	4	101,6	152,4	2

### Te Soldar



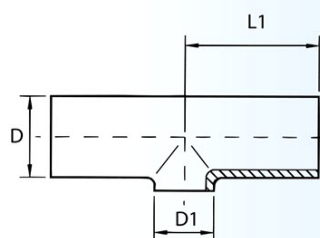
DN mm	DN inch	D mm	L1 mm	t mm
25	1	25,4	55	1,5
38	1 1/2	38,1	70	1,5
51	2	50,8	82	1,5
63	2 1/2	63,5	105	1,5
76	3	76,1	110	1,5-2
101	4	101,6	150	2

### Te Soldar Mandrinar



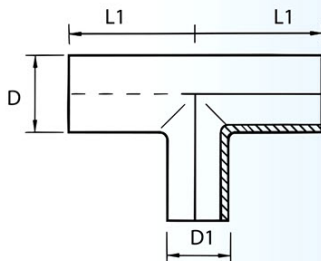
DN mm	DN inch	D mm	L1 mm	t mm
25	1	25,4	55	1,5
38	1 1/2	38,1	70	1,5
51	2	50,8	82	1,5
63	2 1/2	63,5	105	1,5
76	3	76,1	110	1,5-2
101	4	101,6	150	2

### Te Soldar Reducida



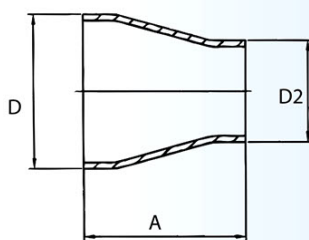
DN mm	DN inch	D mm	D1 mm	L1 mm
38	1	38,1	25,4	70
51	1 1/2	50,8	38,1	82
63	2	63,5	50,8	105
76	2 1/2	76,1	63,5	110
101	3	101,6	76,1	150

### Te Solder Reducida Mandrinar



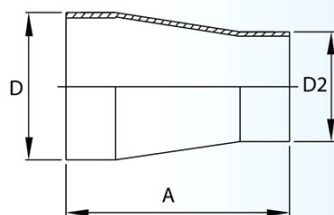
DN	DN	D	D1	L1
mm	inch	mm	mm	mm
38	1	38,1	25,4	70
51	1 1/2	50,8	38,1	82
63	2	63,5	50,8	105
76	2 1/2	76,1	63,5	110
101	3	101,6	76,1	150

### Reducción Solder Concentrica



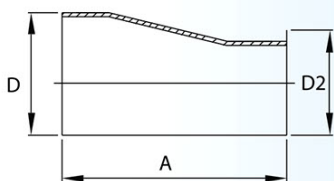
DN	DN	DN1	D	D2	A
mm	inch	mm	mm	mm	mm
38	1 1/2	25	38,1	25,4	39
51	2	38	50,8	38,1	39
63	2 1/2	51	63,5	50,8	39
76	3	63	76,1	63,5	39
101	4	76	101,6	76,1	60
51	2	25	50,8	25,4	57
63	2 1/2	38	63,5	38,1	57
76	3	51	76,1	50,8	57
76	3	38	76,1	38,1	74

### Reducción Solder Concentrica Mandrinar



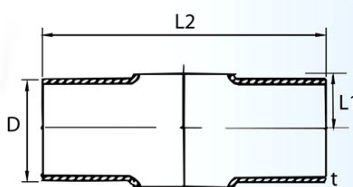
DN	DN	DN1	D	D2	A
mm	inch	mm	mm	mm	mm
38	1 1/2	25	38,1	25,4	64
51	2	38	50,8	38,1	64
63	2 1/2	51	63,5	50,8	64
76	3	63	76,1	63,5	64
101	4	76	101,6	76,1	94

### Reducción Solder Excentrica



DN	DN	DN1	D	D2	A
mm	inch	mm	mm	mm	mm
38	1 1/2	25	38,1	25,4	39
51	2	38	50,8	38,1	39
63	2 1/2	51	63,5	50,8	39
76	3	63	76,1	63,5	39
101	4	76	101,6	76,1	60
51	2	25	50,8	25,4	57
63	2 1/2	38	63,5	38,1	57
76	3	51	76,1	50,8	57

### Cruz Solder



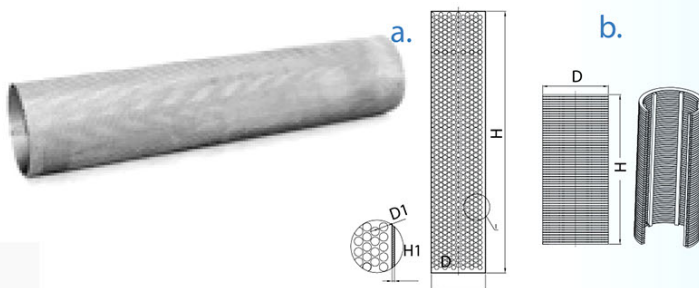
DN	DN	D	t	L2	L1
mm	inch	mm	mm	mm	mm
25	1	25,4	1,5	57,2	15
38	1 1/2	38,1	1,5	84,2	21
51	2	50,8	1,5	104,8	29
63	2 1/2	63,5	1,5	119	36
76	3	76,1	1,5	131,8	44
101	4	101,6	2	174,6	58

### Filtro Escuadra Soldar 90°



DN	DN	D1	H	D	L
mm	inch	mm	mm	mm	mm
25	1	25,4	425	85	77,5
38	1 1/2	38,1	425	85	77,5
51	2	50,8	425	85	77,5
63	2 1/2	63,5	565	102	104
76	3	76,1	585	114	107
101	4	101,6	700	154	127

### Tamíz Filtro Escuadra 90°



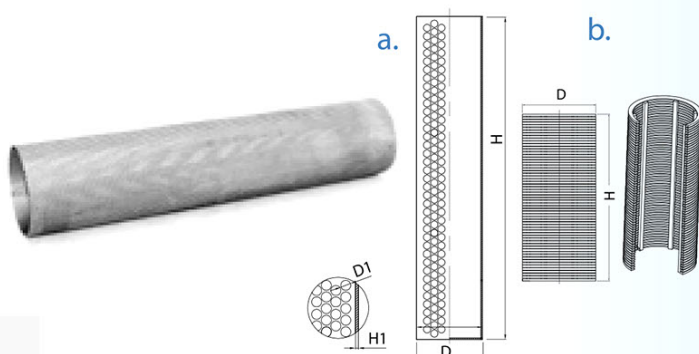
DN	DN	D	H	D1	H1
mm	inch	mm	mm	mm	mm
25	1	58	270	0,5-1-2	1
38	1 1/2	58	270	0,5-1-2	1
51	2	58	270	0,5-1-2	1
63	2 1/2	72,5	312	0,5-1-2	1
76	3	78	350	0,5-1-2	1,2
101	4	105	469	0,5-1-2	1,5

### Filtro de Linea Soldar



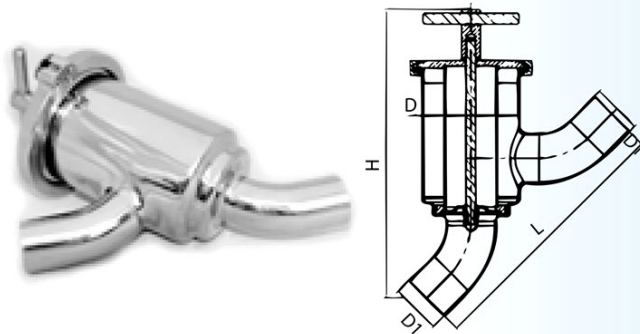
DN	DN	D	H
mm	inch	mm	mm
25	1	25,4	405
38	1 1/2	38,1	405
51	2	50,8	405
63	2 1/2	63,5	485
76	3	76,1	534
101	4	101,6	640

### Tamíz Filtro Linea Soldar



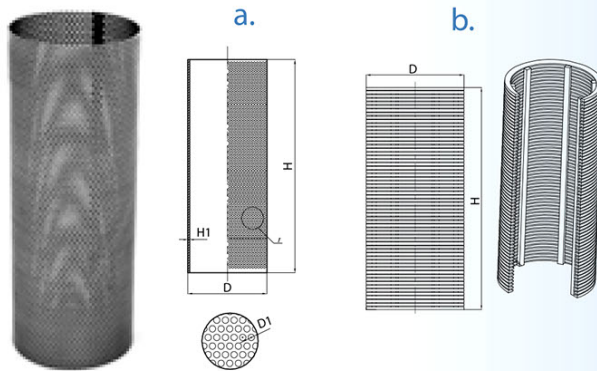
DN	DN	D	H	D1	H1
mm	inch	mm	mm	mm	mm
25	1	58	270	0,5-1	1,2
38	1 1/2	58	270	0,5-1	1,2
51	2	58	270	0,5-1	1,2
63	2 1/2	69	350	0,5-1	1,2
76	3	80	365	0,5-1	1,2
101	4	110	450	0,5-1	1,5

### Filtro Y 45° Soldar



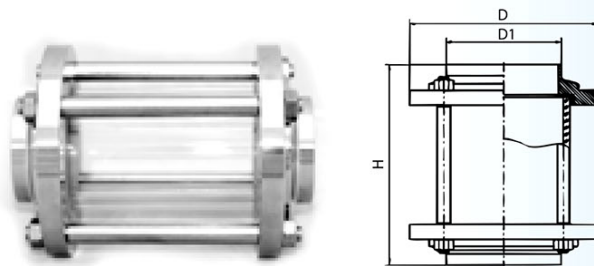
DN	DN	H	L	D1	D
mm	inch	mm	mm	mm	mm
25	1	275	204	25,4	85
38	1 1/2	282	242	38,1	102
51	2	312	280	50,8	102
63	2 1/2	390	362	63,5	114
76	3	405	406	76,1	114
101	4	565	460	101,6	154

### Tamíz Filtro Y 45°



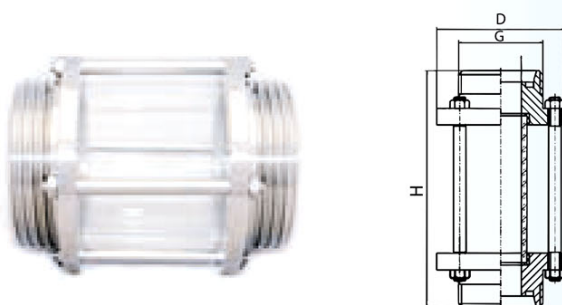
DN	DN	D	H	D1	H1
mm	inch	mm	mm	mm	mm
25	1	55	146	0,5-1-2	1
38	1 1/2	55	146	0,5-1-2	1
51	2	55	146	0,5-1-2	1
63	2 1/2	79	180	0,5-1-2	1
76	3	79	180	0,5-1-2	1
101	4	105	297	0,5-1-2	2

### Mirilla Cilindro Soldar



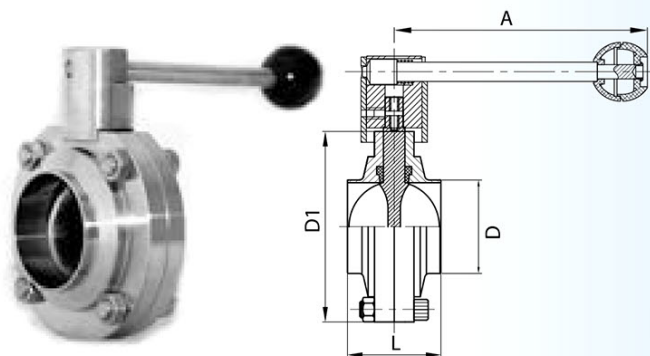
DN	DN	D	D1	H
mm	inch	mm	mm	mm
25	1	78	25,4	140
38	1 1/2	86	38,1	140
51	2	102	50,8	142
63	2 1/2	115	63,5	146
76	3	124	76,1	146
101	4	154	101,6	154

### Mirilla Cilindro Macho



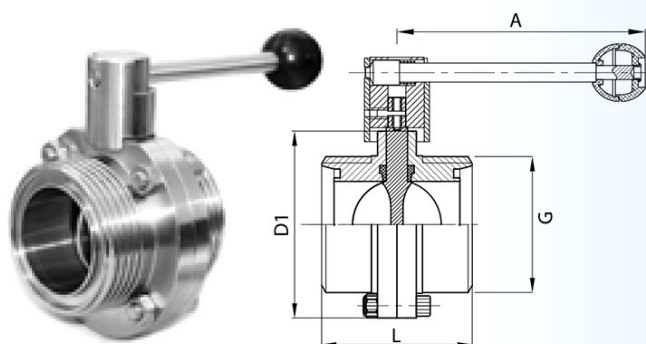
DN	DN	G	D	H
mm	inch	mm	mm	mm
25	1	39,5x1/6	78	156
38	1 1/2	59,5x1/6	86	160
51	2	69,5x1/6	102	166
63	2 1/2	84,5x1/6	115	170
76	3	97,2x1/6	128	174
101	4	131,2x1/6	159	194

### Vácula de Mariposa Soldar/Soldar



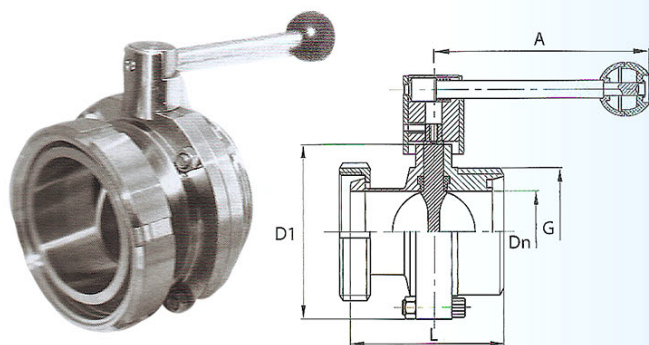
DN	DN	D	A	D1	L
mm	inch	mm	mm	mm	mm
25	1	25,4	130	74	50
38	1 1/2	38,1	130	77,8	50
51	2	50,8	130	98,8	50
63	2 1/2	63,5	160	113,8	52
76	3	76,1	160	126,8	56
101	4	101,6	160	158,8	64

### Vácula de Mariposa Macho/Macho



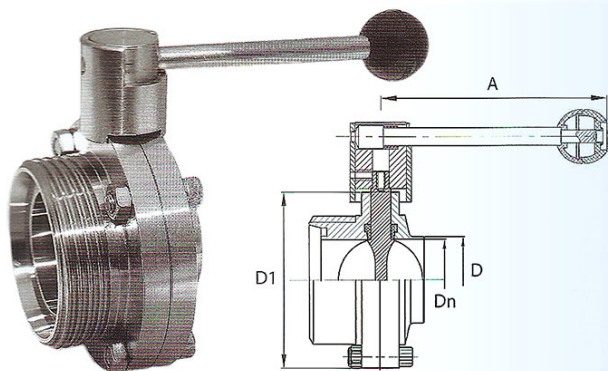
DN	DN	G	A	L	D1
mm	inch	mm	mm	mm	mm
25	1	40X1/6	130	68	74
38	1 1/2	60X1/6	130	68	77,8
51	2	70X1/6	130	76	98,8
63	2 1/2	85X1/6	160	80	113,8
76	3	98X1/6	160	82	126,8
101	4	132X1/6	160	88	158,8

### Vácula de Mariposa Macho/Hembra



SIZE	DN	D	D1	L	A
mm	inch	mm	mm	mm	mm
25	1	25,4	78	71	126
38	1 1/2	38,1	86	78	126
51	2	50,8	102	82	133
63	2 1/2	63,5	115	87	144
76	3	76,1	128	89	144
101	4	101,6	159	103	160

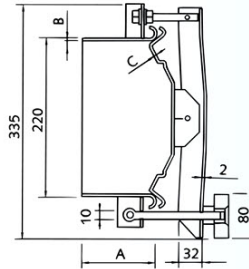
### Vácula de Mariposa Macho/Soldar



SIZE	D	G	D1	L	A
mm	inch	mm	mm	mm	mm
25	1	40x1/6	78	71	126
38	1 1/2	60x1/6	86	73	126
51	2	70x1/6	102	88	133
63	2 1/2	85x1/6	115	97	144
76	3	98x1/6	128	102	144
101	4	132x1/6	159	124	160



### Tapa Redonda 220mm Apertura Lateral

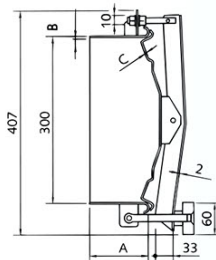


Amm	Bmm	Cmm	P <sub>max</sub> bar	Kg
65	2	1.2	0.3	2.4
100	2	1.2	0.3	2.8

0,3 bar Max pressure • Pressione massima

**AISI 304 + 316**

### Tapa Redonda 300mm Apertura Lateral

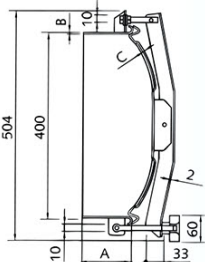


Amm	Bmm	Cmm	P <sub>max</sub> bar	BAPOΣ
65	2	1.2	0.2	3.1
100	2	1.2	0.2	3.6

0,2 bar Max pressure • Pressione massima

**AISI 304 + 316**

### Tapa Redonda 400mm Apertura Lateral

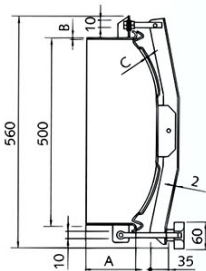


Amm	Bmm	Cmm	P <sub>max</sub> bar	BAPOΣ
65	2	1.5	0.2	5.4
100	2	1.5	0.2	6.1

0,2 bar Max pressure • Pressione massima

**AISI 304 + 316**

### Tapa Redonda 500mm Apertura Lateral

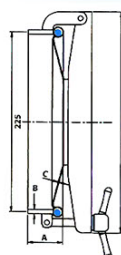
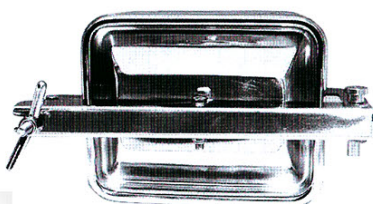


Amm	Bmm	Cmm	P <sub>max</sub> bar	BAPOΣ
65	2	1.5	0.2	8.7
100	2	1.5	0.2	9.6

0,2 bar Max pressure • Pressione massima

**AISI 304 + 316**

### Tapa Rectangular 175x225mm

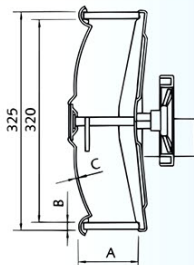


Amm	Bmm	Cmm	P <sub>max</sub> bar	Kg
40	5	1.2	0.7	3.2
60	6	1.2	0.7	4.3

0,7 bar Max pressure • Pressione massima

**AISI 304 + 316**

### Boca Oval 450x320 Apertura Interna

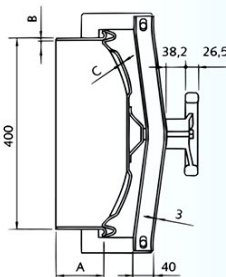


Amm	Bmm	Cmm	P <sub>max</sub> bar	BAPOΣ
60	6	1.5	3	7
80	6	1.5	3	8.1
60	8	1.5	3	8.1
80	8	1.5	3	9.7

**3 bar** ⌚ Max pressure • Pressione massima

**AISI 304 + 316**

### Boca Redonda 400mm Apertura Externa

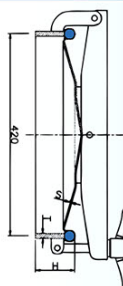


Amm	Bmm	Cmm	P <sub>max</sub> bar	BAPOΣ
100	2	1.5	0.5	7.8
100	3	1.5	0.5	9.2
100	3	2	0.7	10.5

**0,5 bar** ⌚ Max pressure • Pressione massima

**AISI 304 + 316**

### Boca Rectangular 420x530mm Apertura Externa

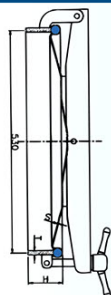


Hmm	Tmm	Smm	P <sub>max</sub> bar	BAPOΣ
60	8	2	0.6	17.8
100	8	2	0.6	22.2
60	10	2	0.6	19.5
100	10	2	0.6	25

**0,6 - 0,8 bar** ⌚ Max pressure • Pressione massima

**AISI 304 + 316**

### Boca Rectangular 530x420mm Apertura Externa

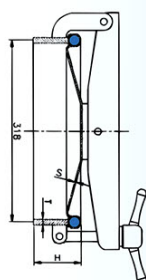


Hmm	Tmm	Smm	P <sub>max</sub> bar	BAPOΣ
60	8	2	0.5	18.8
100	8	2	0.5	23.2
60	10	2	0.5	20.4
100	10	2	0.5	26

**0,5 - 0,7 bar** ⌚ Max pressure • Pressione massima

**AISI 304 + 316**

### Boca Rectangular 318x420mm Apertura Externa



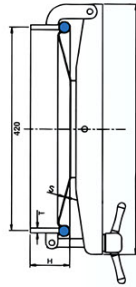
Hmm	Tmm	Smm	P <sub>max</sub> bar	BAPOΣ
60	8	2	1	14
100	8	2	1	17.3
60	10	2	1	15.2
100	10	2	1	19.4

**1 bar** ⌚ Max pressure • Pressione massima

**AISI 304 + 316**



**Boca Rectangula 420x318 Apertura Interna**

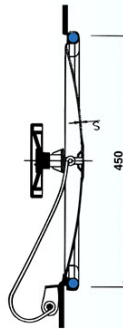


Hmm	Tmm	Smm	P <sub>max</sub> bar	ΒΑΡΟΣ
60	8	2	1	13
100	8	2	1	16.4
60	10	2	1	14.3
100	10	2	1	18.5

**1 bar** ⚙ Max pressure • Pressione massima

**AISI 304 + 316**

**Boca Oval Aséptica 450x320mm Apertura Interna**

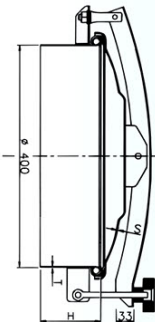


Tmm	Smm	P <sub>max</sub> bar	ΒΑΡΟΣ
6	1.5	3	7.9
6	1.5	3	9.0
8	1.5	3	9.0
8	1.5	3	10.6

**3 bar** ⚙ Max pressure • Pressione massima

**AISI 304 + 316**

**Tapa Aséptica 400mm Apertura Lateral**

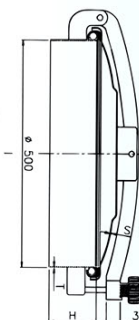


Hmm	Hmm	Smm	P <sub>max</sub> bar	ΒΑΡΟΣ
65	2	2	0.2	6.1
100	2	2	0.2	6.8
150	2	2	0.2	7.8
200	2	2	0.2	8.8

**0,2 bar** ⚙ Max pressure • Pressione massima

**AISI 304 + 316**

**Tapa Aséptica 454mm**

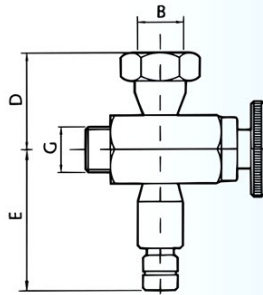


Hmm	Tmm	Smm	P <sub>max</sub> bar	Peso kg Weight
65	2	2	0.2	12.3
100	2	2	0.2	13.2

**0.2 bar** ⚙ Max pressure • Pressione massima

**AISI 304 + 316**

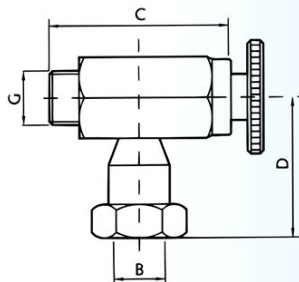
### Grifo Nivel Inferior con Pulga



DN	G	B	C	D
mm	inch	mm	mm	mm
15	3/8	14	46	61
15	3/8	15	46	61
15	3/8	16	46	61
15	3/8	20	46	61
15	1/2	14	46	61
15	1/2	15	46	61
15	1/2	16	46	61
15	1/2	20	46	61
15	1/2	24	61	61

AISI 304 + 316

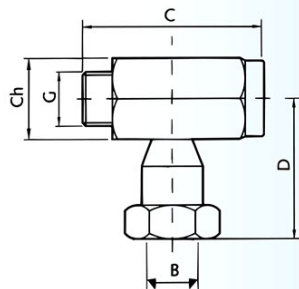
### Grifo Nivel Inferior sin Pulga



DN	G	B	C	D
mm	inch	mm	mm	mm
15	3/8	14	68	56
15	3/8	15	68	56
15	3/8	16	68	56
15	3/8	20	68	56
15	1/2	14	68	56
15	1/2	15	68	56
15	1/2	16	68	56
15	1/2	20	68	56
15	1/2	24	68	61

AISI 304 + 316

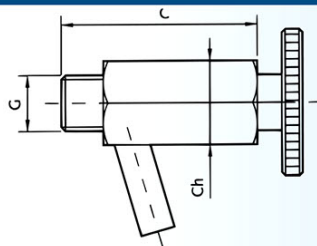
### Conexión Nivel Inferior



DN	G	B	C	D	ch
mm	inch	mm	mm	mm	mm
15	3/8	14	68	56	30
15	3/8	15	68	56	30
15	3/8	16	68	56	30
15	3/8	20	68	56	30
15	1/2	14	68	56	30
15	1/2	15	68	56	30
15	1/2	16	68	56	30
15	1/2	20	68	56	30
15	1/2	24	68	61	30

AISI 304 + 316

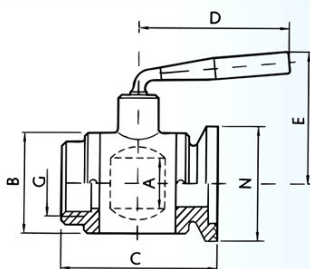
### Grifo Sacamuestras



DN	G	C	ch
mm	inch	mm	mm
15	3/8	56	24
15	1/2	56	24

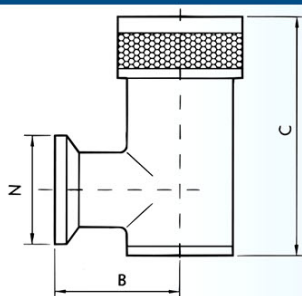
AISI 304 + 316

### Válvula Enológica Garolla



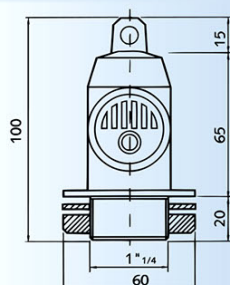
DN	G	GAROLLA	N	A	B	C	D	E
mm	inch	mm	mm	mm	mm	mm	mm	mm
32	1 1/4	40	65	36	62	100	120	101
40	1 1/2	40	65	36	62	100	120	101
40	1 1/2	50	75	45	78	115	153	120
50	2	50	75	45	78	115	153	120
50	2	60	86	50	90	128	153	125
65	2 1/2	70	98	66	114	160	190	158
80	3	80	108	76	133	170	248	193
100	4	100	128	98,5	160	190	248	230
125	5	120	158	120	200	255	340	250

### Válvula de Seguridad

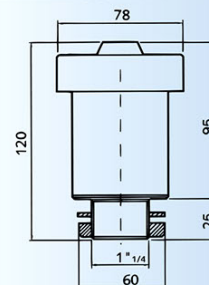


DN	N	B	C
mm	mm	mm	mm
40	65	69	135

### Válvula de Seguridad Polietileno HI/h-130



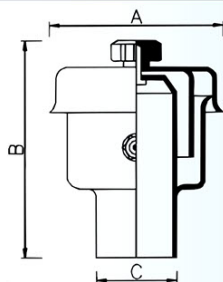
### Válvula de Seguridad Polietileno HI/h-400



### Válvula de Alivio de Presión Moplen DIN con Rosca DN50



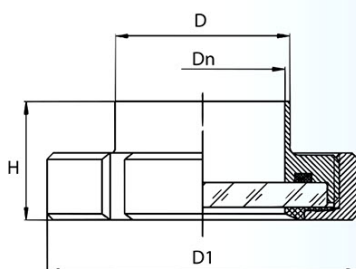
### Válvula de Seguridad de Doble Acción Soldar



Ø mm	A mm	B mm	C mm	hl/h
60	170	185	60	300
100	210	235	100	1000

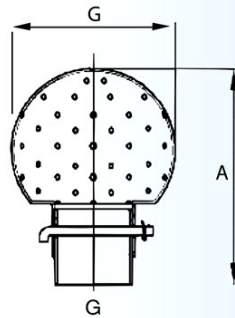
AISI 304 + 316

### Mirilla Soldar



DN	D1	D	H
mm	mm	mm	mm
25	63	28	29
32	70	34	31
40	78	40	33
50	92	52	35
65	112	70	40
80	127	85	45
100	148	104	54

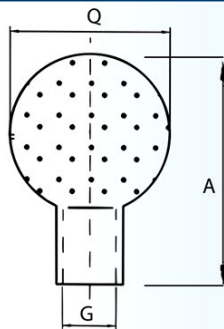
**Bola Limpieza Mandrinar**



Q	G	A	Fluxation	Cleaning Radius	Pressure
mm	inch	mm	m <sup>3</sup> /h	m	bar
63	1	95	17	1,00-1,25	2,5
76	11/2	110	23	1,25-1,75	2,5
91	2	125	55	2,00-3,00	3,5
100	21/2	135	58	3,00-3,50	3,5

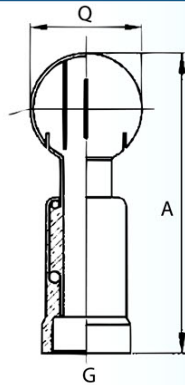
Válvula de Seguridad Polietileno HI/h-400

**Bola Limpieza Soldar**



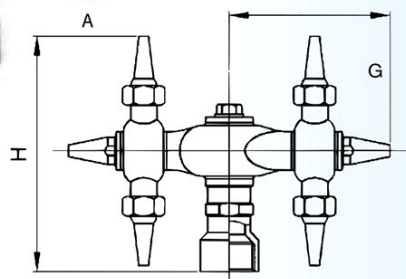
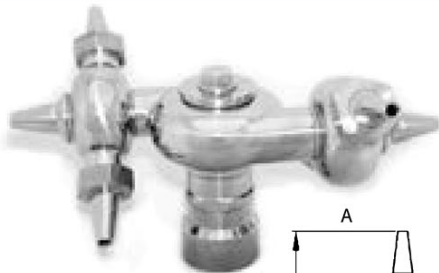
Q	G	A	Fluxation	Cleaning Radius	Pressure
mm	inch	mm	m <sup>3</sup> /h	m	bar
63	1	72	17	1,00-1,25	2,5
76	11/4	85	23	1,25-1,75	2,5
76	11/2	87	55	1,25-1,75	2,5
91	2	102	58	2,00-3,00	3,5

**Bola Limpieza Giratoria**

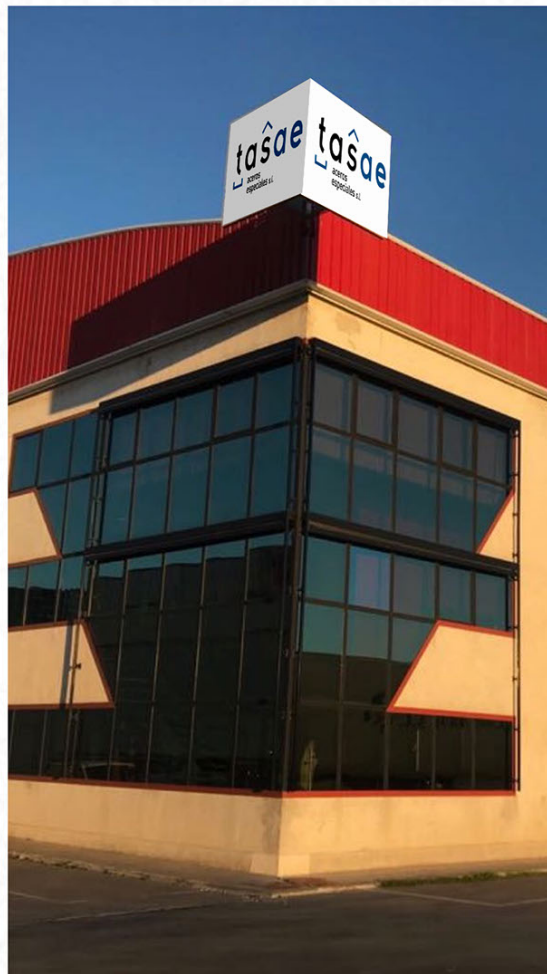


Q	G	A	Fluxation	Cleaning Radius	Pressure
mm	inch	mm	m <sup>3</sup> /h	m	bar
37	1/2	110	8	0,90	1
53	1	140	12	1,25	2
53	11/4	160	12	1,25	2
63	11/2	170	12	1,25	2
76	2	192	38	1,50	2
91	21/2	220	38	2,00	2

**Cabezal Limpeza Giratorio**



H	G	A	Fluxation	Cleaning Radius	Pressure
mm	inch	mm	m <sup>3</sup> /h	m	bar
162	1/2	112	15	1-2	0,5-1
165	1	118	23	2-3	1,5-2
189	11/4	142	38	2,5-3	1,8-2,5
189	11/2	142	38	2,5-3	1,8-2,5
191	2	145	60	3,5-4	2,5-3



**Pol. Ind. Las Quemadas**  
**c/José de Gálvez y Aranda, 31-32 14014 CÓRDOBA**  
**Tel : +34 957 41 84 78**  
**info@tasae.es**  
**www.tasae.es**